



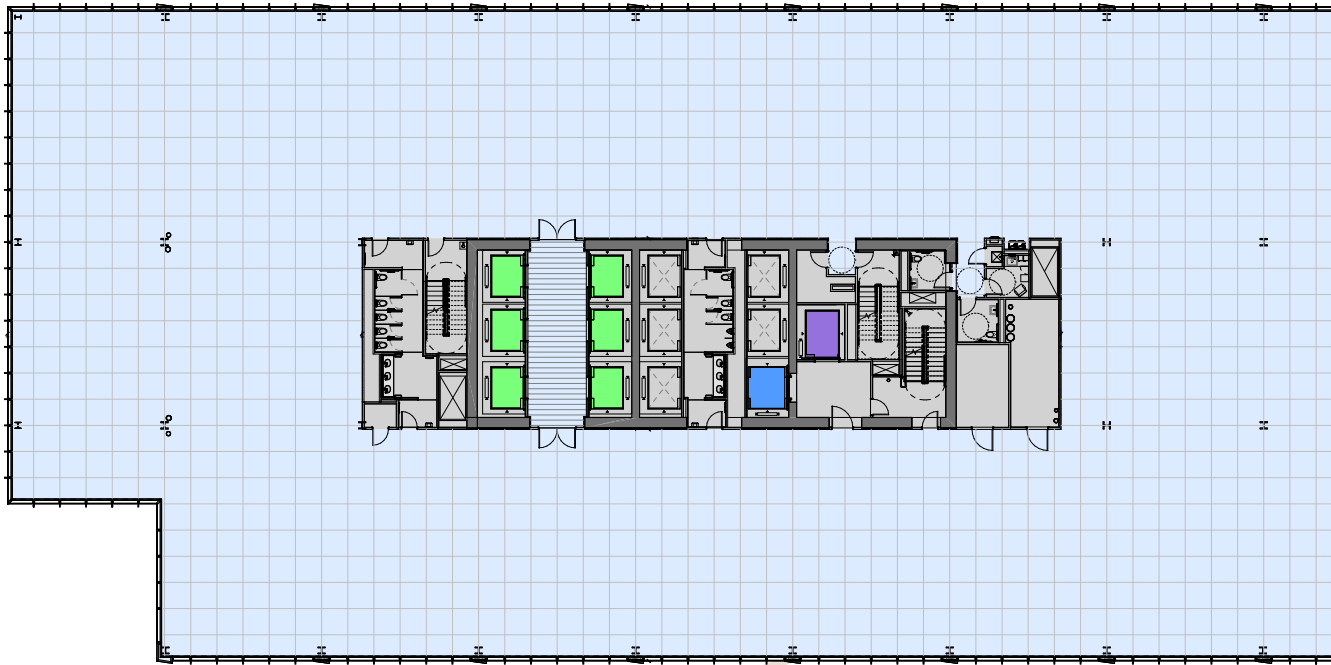
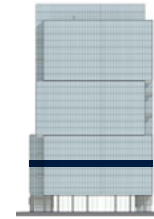
# Floor 9

## 31,504 SF

L A W R E N C E



### Key Plan



### Level Features

- 44' bay depth to core
- 30' column bays
- 5' planning modules
- 3 stairwells per floor
- Column-free corner opportunities
- Dual-access "thru core" bathrooms
- Two private bathrooms and a wellness room on each floor
- **10' finished ceiling height**
- **14' slab height**
- **5 corner office opportunities**

### For Leasing Information

**JAMIE ROUPP**  
 +303 217 7947  
[james.roupp@jll.com](mailto:james.roupp@jll.com)

**MICHAEL CRANE**  
 +303 260 6533  
[michael.crane@jll.com](mailto:michael.crane@jll.com)

**JULIE RHOADES**  
 +303 542 1520  
[julie.rhoades@jll.com](mailto:julie.rhoades@jll.com)

**MADDY STEVENSON**  
 +303 542 1514  
[maddy.stevenson@jll.com](mailto:maddy.stevenson@jll.com)

Jones Lang Lasalle Brokerage, Inc  
 ©2025 Jones Lang Lasalle LP, Inc. All rights reserved. All information contained herein is from. Sources deemed reliable; however, no representation or warranty is made to the accuracy thereof.